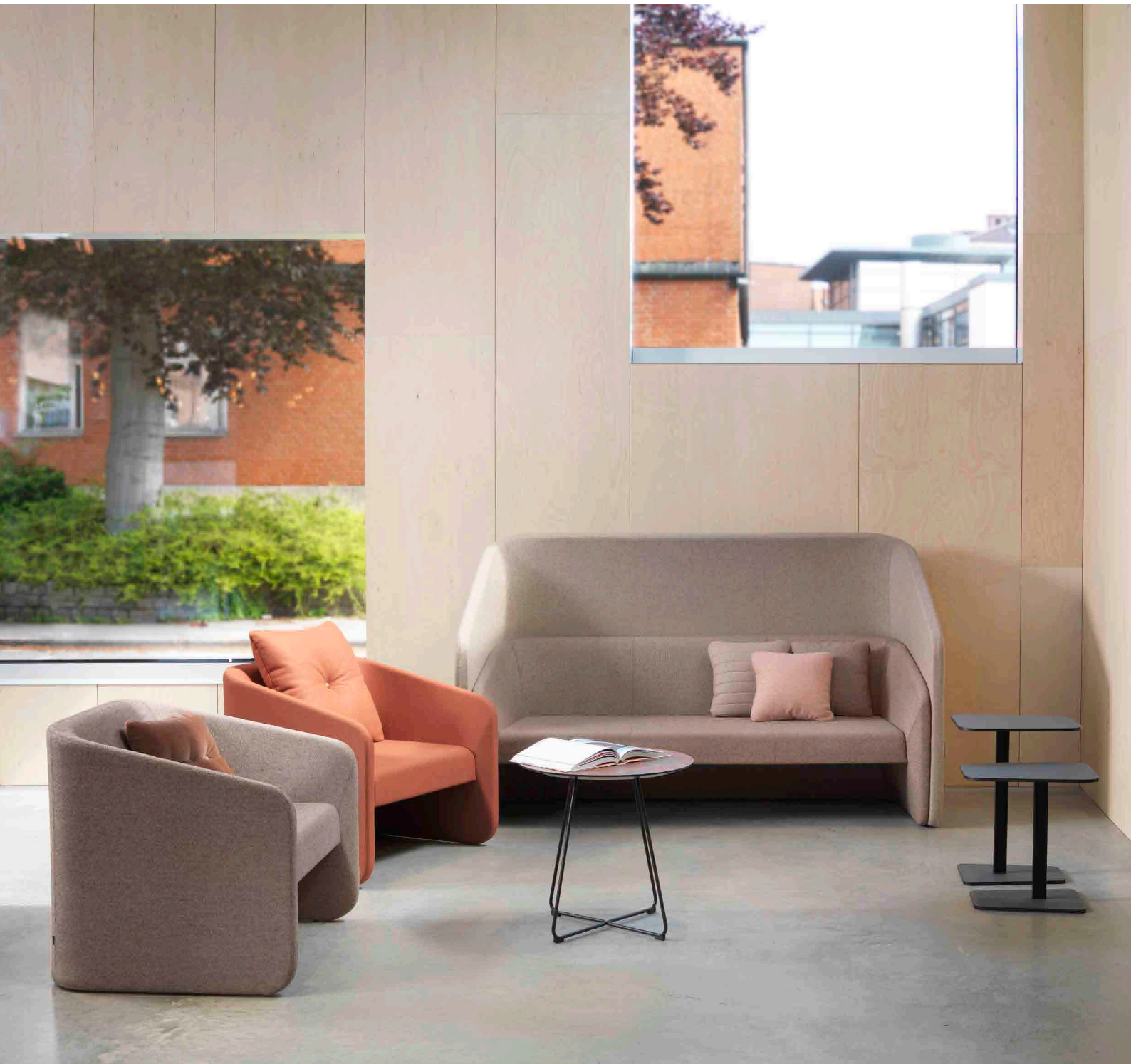


Race

Design – Cory Grosser



JOHANSON



Introduction

Race is a modern seating series that comprises an armchair and 2-seat and 3-seat sofas. The underlying thought is that the generous proportions will be an invitation to truly relax for a while. The intention is for Race to stand out as the obvious choice in lounges and hotel lobbies, while also finding a natural place in contemporary private homes.

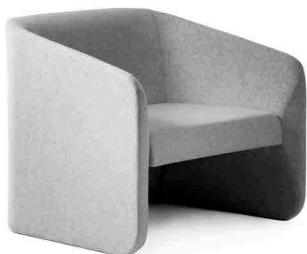


Designer

Cory Grosser is an American industrial designer who has been running his own design studio in Los Angeles since 2002. Today Cory is acknowledged as one of the USA's leading names in product design and has received numerous awards for his work. During autumn 2016 Johanson introduced the first collaboration with Cory Grosser: the series Race.



Models



1-seater



1-seater with screen



2-seater



2-seater with screen



3-seater



3-seater with screen

Material

Seat - Upholstery materials

Johanson offers a very generous range of fabrics, leather and artificial leather from the most reputable suppliers in the world. Should any other material be desired despite the wide selection, it is also possible to suggest other materials. Johanson does not charge start-up costs for handling non-standard materials.

Accessories

Electrical equipment

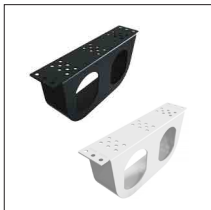
Thanks to the bracket, you can mount a Powerdot Mini with power socket or smart charging with 2 USB-C sockets in the desired location using the included screws.



Bracket



Powerdot bracket mini, single
Black / white



Powerdot bracket mini, double
Black / white

Powerdot



Powerdot Mini Electric
1 power (type F, Schuko)
Black / white



Powerdot Mini USB
2 USB-C PD
(30W/20V/1,5A)
Black / white



Buttons
Ø18mm, Ø30mm,
Ø50mm

Facts

Material

The seat is made in moulded CMHR foam (density 65kg) that meets the highest requirements for flammability (CMHR quality).

Certificate

- Fire certificate (Danak)



BIM - objects can be downloaded

at johansondesign.com



3D Max



Archicad



Revit



Autocad 2D



Autocad 3D



Sketchup



Recycling

All steel parts are recyclable.

Before we finish the chrome/lacquer all grease/oil is removed by alkaline wash and then sent for destruction. The lacquering is produced by electrostatic epoxy powder coating that gives a minimum of waste. The electrostatic chrome (chrome 3) is recyclable. The plastic parts that are used are recyclable by grinding. All upholstery and frames of synthetic material are totally without C.F.C. emissions. All glue is water based.

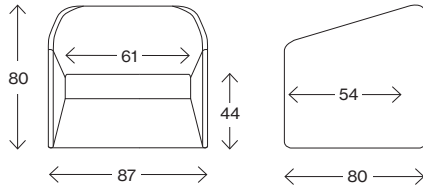
Material declaration

For more information about the product please download material declaration on our website, under Downloads à Product Information at www.johansondesign.com

Facts

Race

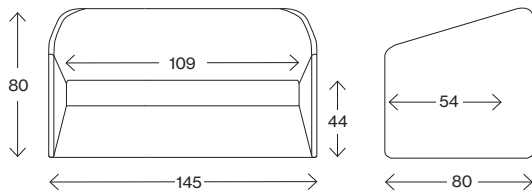
Measurements cm



1-seater

Weight (kg) 32,1
Volume (m³) 0,557

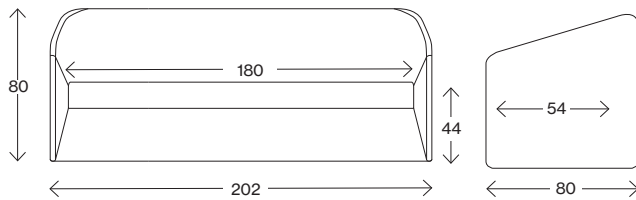
Measurements cm



2-seater

Weight (kg) 62,7
Volume (m³) 0,928

Measurements cm



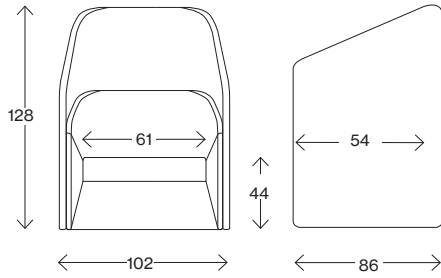
3-seater

Weight (kg) 93,6
Volume (m³) 1,293

Facts

Race

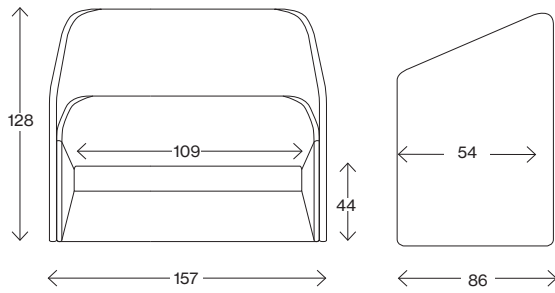
Measurements cm



1-seater with screen

Weight (kg) 63,0
Volume (m³) 1,123

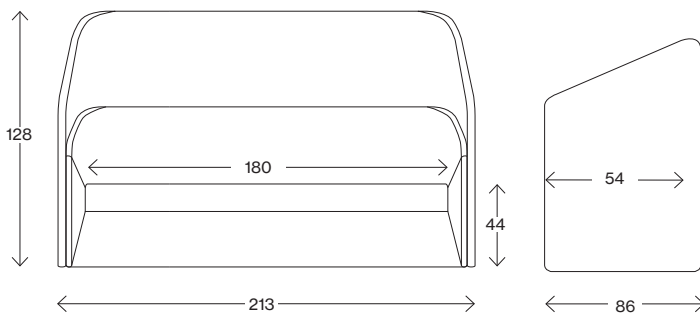
Measurements cm



2-seater with screen

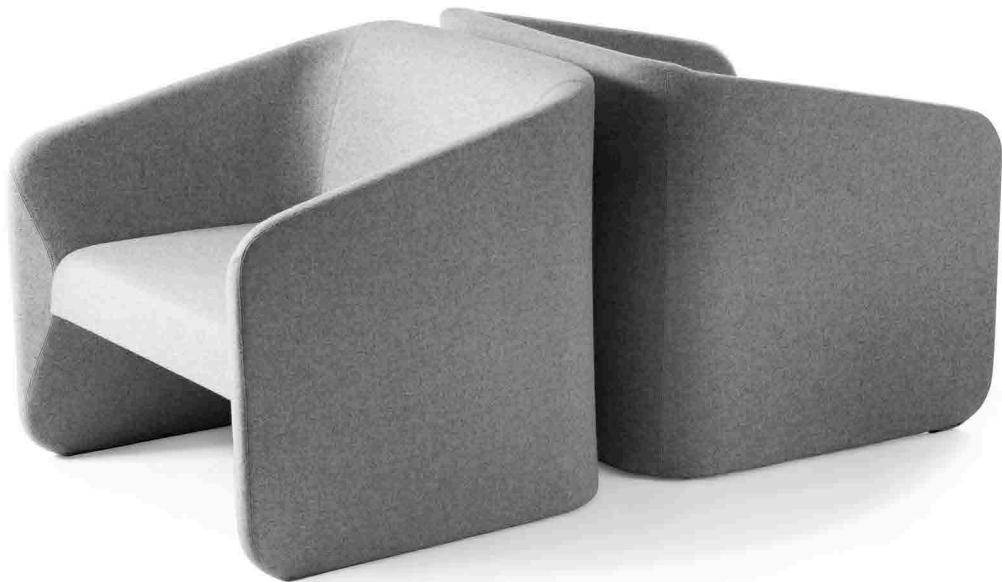
Weight (kg) 122,0
Volume (m³) 1,728

Measurements cm



3-seater with screen

Weight (kg) 182,1
Volume (m³) 2,345



JOHANSON

Johanson Design AB | Anders Anderssons Väg 7 | 285 35 Markaryd | Sweden
Tel +46-433 725 00 | www.johansondesign.com