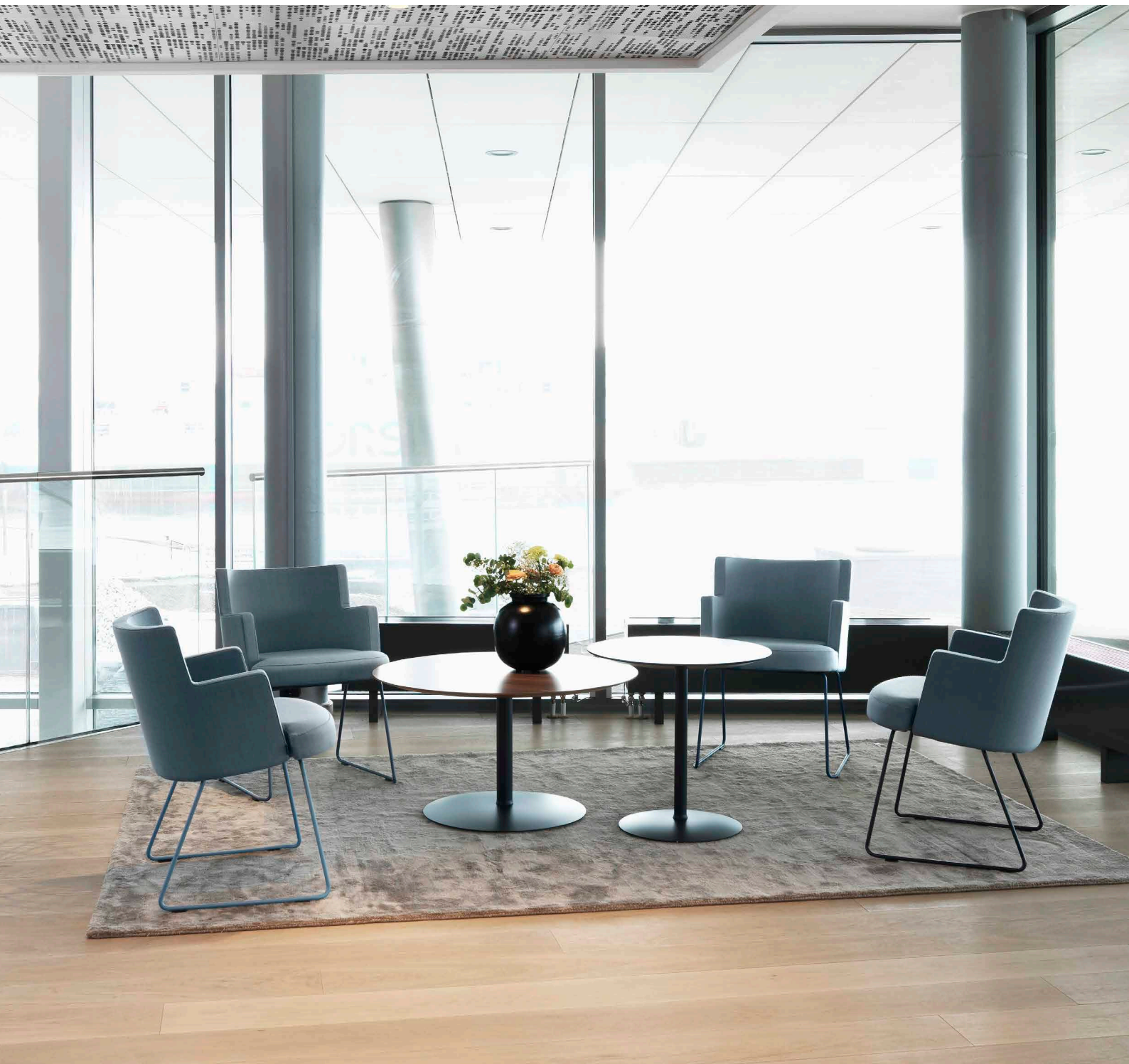


Stay

Design – Team Johanson



JOHANSON



Introduction

Stay features the same simple and practical design that characterises the entire Johanson range. The base is extremely slim and sleek, yet also brilliantly stable.

Model



Colour

Multicolour - Finish RAL

Take part in Johanson's color range, 405 variants of different finishes are offered as standard on steel frames and metal details. Choose from all 195 RAL colors, alternatives are available both as solid finish (gloss 72) or Structure finish which has a matte, slightly textured elegant surface. In addition, 15 RAL colors with pearl finish and chrome are offered.

For all colours see www.johansondesign.com

- 195 Solid collection (gloss 72)
- 195 Structure collection (matte, textured surface)
- 15 Pearl finish collection and chrome.



Table tops



Discus

Chamfered edge with thickness 25mm. MDF with laminate or veneer in different executions.

Finish	Description	Edge
White laminate	F1040 MAT Alpino RAL 9010	Discus edge, natural lacq. MDF
Black laminate	F2253 MAT Diamond black RAL 9011	Discus edge, natural lacq. MDF
Light grey laminate	F7927 MAT Folkestone NCS S 2500-N	Discus edge, natural lacq. MDF
Oak laminate	F5374 NAT Elegant oak	Discus edge, natural lacq. MDF
Birch laminate	F7921 MAT Birch	Discus edge, natural lacq. MDF
Wenge laminate	F1614 MAT Punga Punga Wood	Discus edge, natural lacq. MDF
Walnut laminate	F5150 MAT American Walnut	Discus edge, natural lacq. MDF
Ash laminate	F8843 NAT Natural Ash	Discus edge, natural lacq. MDF
Oak veneer	Clear lacquered oak veneer	Discus edge, natural lacq. MDF
Birch veneer	Clear lacquered birch veneer	Discus edge, natural lacq. MDF
Ash veneer	Clear lacquered ash veneer	Discus edge, natural lacq. MDF
Formica Collection Colors	Any color from Formica Collection Colors:	Discus edge, natural lacq. MDF
White laminate	F1040 MAT Alpino RAL 9010	Discus edge, white lacquered MDF
Black laminate	F2253 MAT Diamond black RAL 9011	Discus edge, black MDF
Black stained oak veneer	Black stained lacquered oak veneer	Discus edge, black stained MDF
White stained oak veneer	Oak veneer white pigmented hardwax	Discus edge, white stained MDF
Black stained ash veneer	Black stained lacquered ash veneer	Discus edge, black stained MDF
White stained ash veneer	Ash veneer white pigmented hardwax	Discus edge, white stained MDF
Abet Laminati	Rocks 557 Papier	Discus edge, natural lacq. MDF
Abet Laminati	Rocks 1451 Papier	Discus edge, natural lacq. MDF
Abet Laminati	Rocks 596 Climb	Discus edge, natural lacq. MDF
Fenix NTM laminate	0718 Grigio Londra	Discus edge, black MDF
Fenix NTM laminate	0720 Nero Ingo	Discus edge, black MDF
Fenix NTM laminate	0724 Grigio Bromo	Discus edge, black MDF
Fenix NTM laminate	0752 Grigio Antrim	Discus edge, black MDF
Formica Collection True Scale	F3458 Travertine Silver AR Plus	Discus edge, natural lacq. MDF
Formica Collection True Scale	F3457 Breccia Paradiso AR Plus	Discus edge, natural lacq. MDF
Formica Collection True Scale	F3476 Jet Sequoia AR Plus	Discus edge, natural lacq. MDF
Formica Collection Patterns	F8832 Elemental Corten AHD	Discus edge, natural lacq. MDF
Formica Collection Colors	Any color from Formica Collection Colors:	Colour lacquered to match laminate



Basic

Straight edge with thickness 25mm.

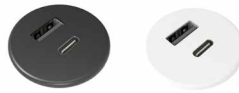
Finish	Description	Edge
White laminate		Basic edge, white ABS-edge
Black laminate		Basic edge, black ABS-edge
Forbo Desktop	4023 Nero	Basic edge in matching colour
Forbo Desktop	4172 Mauve	Basic edge in matching colour
Forbo Desktop	4132 Ash	Basic edge in matching colour
Forbo Desktop	4179 Smokey Blue	Basic edge in matching colour
Forbo Desktop	4174 Conifer	Basic edge in matching colour
Forbo Desktop	4184 Olive	Basic edge in matching colour
Forbo Desktop	4176 Mushroom	Basic edge in matching colour
Kvadrat Really	Cotton Cream	ABS-edge
Kvadrat Really	Cotton Blue	ABS-edge
Kvadrat Really	Cotton White	ABS-edge

Other

Besides our standard range of veneer, laminate, stain and lacquer-colours we can offer customized solutions.

Electric equipment

When ordering these products in combination with table tops, the cost for cut out is included in the price. Schuko coupling is delivered as standard.



Powerdot Micro
1 USB-A & 1 USB-C (15,5W/5V/3,1A)
Black / white



Powerdot Mini USB
2 USB-C PD (30W/20V/1,5A)
Black / white



Powerdot Mini Electric
1 power (type F, Schuko)
Black / white



Powerdot Midi
1 power (type F, Schuko) &
1 USB-C PD (30W/20V/1,5A)
Black / white

Powerdot package

Complete with table cover that can be opened from two sides, spacious tray with plenty of space for connectors, Powerdots, textile bag and power strip. The textile bag hides hanging cables in an efficient and discreet way. In combination with Powerdot Electric/Powerdot Electric-USB.



Powerdot Electric
1 power (type F, Schuko) &
4 cable holes
Black



Powerdot Electric USB + charger
1 power (type F, Schuko), 1 USB-A, 1
USB-C (max 60w, 5/9/12/20V, max 3A) &
2 cable holes. Charger for Powerdot.
Black



Powerdot package 31x15cm
Cover and tray in black, white or silver

Powerdot package, 2 Powerdot Electric (2 power)

Powerdot package, 2 Powerdot Electric USB
(2 power, 2 USB-A, 2 USB-C)

Powerdot package, 1 Powerdot Electric and
1 Electric USB (2 power, 1 USB-A, 1 USB-C)

Cable hatch

Practical Cable hatch in the same material as the table top for data and electrical connection, customized to the customer's wishes. We can also provide a practical mounting tray, L370xW200 in silver. Contact Johanson support for info.



Facts

Material

- Recycled Swedish steel

Certifikat



BIM -objects can be downloaded

www.johansondesign.com



3D Max



Autocad 3D



Archicad



Sketchup



Revit



pCon



Autocad 2D

Recycling

All steel parts are recyclable.

Before we finish the chrome/lacquer all grease/oil is removed by alkaline wash and then sent for destruction. The lacquering is produced by electrostatic epoxy powder coating that gives a minimum of waste. The electrostatic chrome (chrome 3) is recyclable. The plastic parts that are used are recyclable by grinding. All upholstery and frames of synthetic material are totally without C.F.C. emissions. All glue is water based.

Facts

Dimensions cm

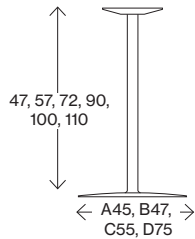


Table heights inc. top of 25mm

Recommended combinations

Top	Stay
Ø50-60	47/57/72-A, 90/100/110-B
Ø75	47/57/72/90 100/110-C
Ø90	47/57/72/90 100/110-C
Ø100-110	47/57/72/90 100/110-C
60x70	47/57/72/90-B
70x70	47/57/72/90-C
120x70	47/57/72-B (x2)
140x70	47/57/72-B (x2)
180x70	47/57/72-B (x2)
180x90	47/57/72-C (x2)

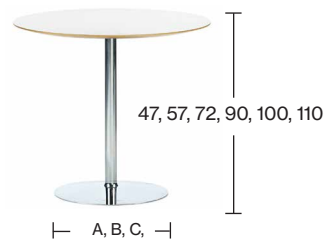


Table heights inc. top of 25mm

Ø width on foot plates

- A Ø40
- B Ø47
- C Ø55

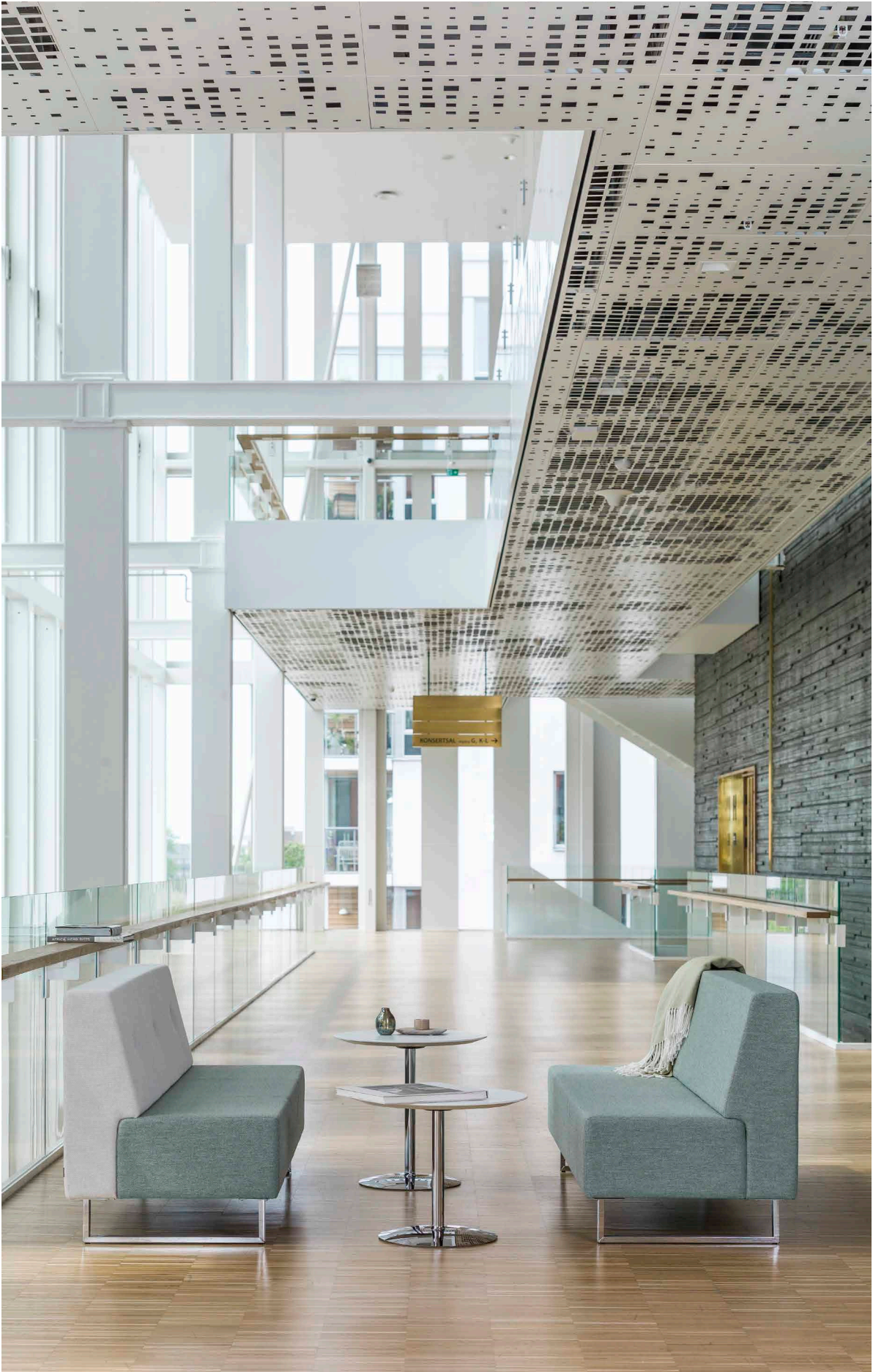
Accessories



Footrest

For height 110-B











JOHANSON

Johanson Design AB | Anders Anderssons Väg 7 | 285 35 Markaryd | Sweden
Tel +46-433 725 00 | www.johansondesign.com