

# Sputnik

Design – Mattias Ljunggren



**JOHANSON**



## Introduction

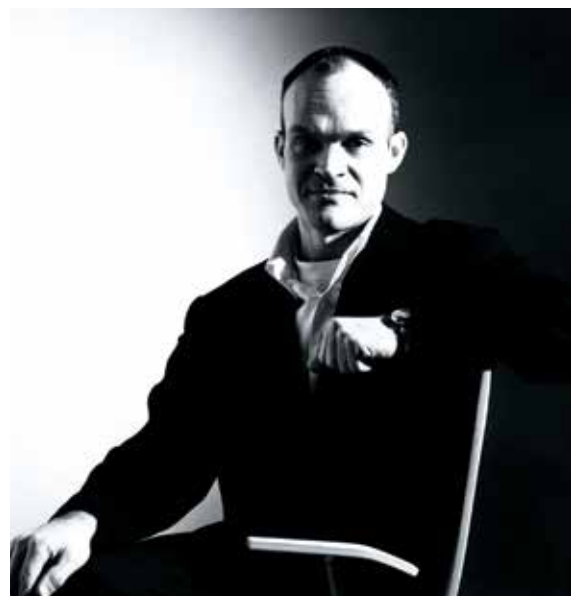
A confidently designed, architectural and extremely functional bar stool. Timeless design that suits the majority of settings.





## Designer

Mattias Ljunggren's design is characterised by a pared-down lightness of touch. Mattias Ljunggren was born on the island of Gotland in 1956 and is a qualified Interior Architect SIR/MSA. He works on artistic projects, exhibitions in galleries and museums, takes on private and public interior design commissions and designs furniture. He has twice won the Swedish Association of Architects' Golden Chair award ("Guldstolen")



# Models

---



Sputnik 46



Sputnik 65



Sputnik 80

# Material

---

## Seat - Upholstery materials

Johanson offers a very generous range of fabrics, leather and artificial leather from the most reputable suppliers in the world. Should any other material be desired despite the wide selection, it is also possible to suggest other materials. Johanson does not charge start-up costs for handling non-standard materials.

## Multicolour - Finish RAL

Take part in Johanson's color range, 405 variants of different finishes are offered as standard on steel frames and metal details. Choose from all 195 RAL colors, alternatives are available both as solid finish (gloss 72) or Structure finish which has a matte, slightly textured elegant surface. In addition, 15 RAL colors with pearl finish and chrome are offered.

For all colours see [www.johansondesign.com](http://www.johansondesign.com)

**195 Solid collection** (gloss 72)

**195 Structure collection** (matte, textured surface)

**15 Pearl finish collection** and chrome.



# Facts

---

## Material

The seat is made of wood and polyether. Foam which meets the highest fire classification CMHR- Combustion Modified High Resilience, is available for all models on request. The base is made of finished/lacquered metal.

## Fire classification

All products meet Möbelfakta's fire requirements. All polyether/foam are tested to Cal TB 117. All standard fabrics meet EN 1021:1 & 2. Other classification, for example BS 5856 (Crib 5) on request, please contact customer support.

## Recycling


All steel parts are recyclable. Before we finish the chrome/lacquer all grease/oil is removed by alkaline wash and then sent for destruction. The lacquering is produced by electrostatic epoxy powder coating that gives a minimum of waste. The electrostatic chrome (chrome 3) is recyclable. The plastic parts that are used are recyclable by grinding. All upholstery and frames of synthetic material are totally without C.F.C. emissions. All glue is water based.

## Certificate



## BIM - objects can be downloaded

at [johansondesign.com](http://johansondesign.com)

 3D Max

 Archicad

 Revit

 Autocad 2D

 Autocad 3D

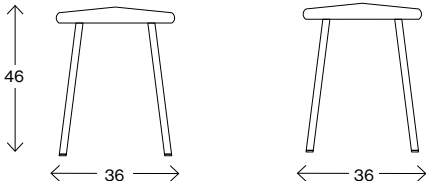
 Sketchup

 pCon

# Facts

---

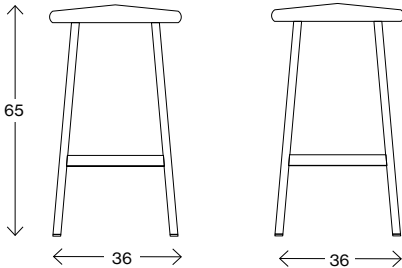
Measurements cm



**Sputnik 46**

Weight (kg) 4,0  
Volume (m<sup>3</sup>) 0,07

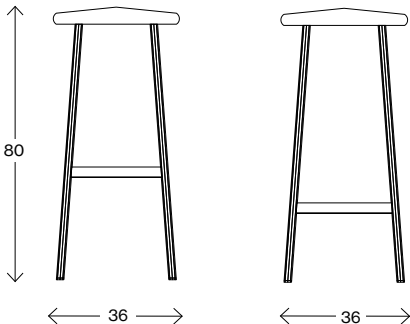
Measurements cm



**Sputnik 65**

Weight (kg) 6,3  
Volume (m<sup>3</sup>) 0,138

Measurements cm



**Sputnik 80**

Weight (kg) 6,3  
Volume (m<sup>3</sup>) 0,138





# JOHANSON

---

Johanson Design AB | Anders Anderssons Väg 7 | 285 35 Markaryd | Sweden  
Tel +46-433 725 00 | [www.johansondesign.com](http://www.johansondesign.com)