

Gap

Design – Simon Pengelly



JOHANSON



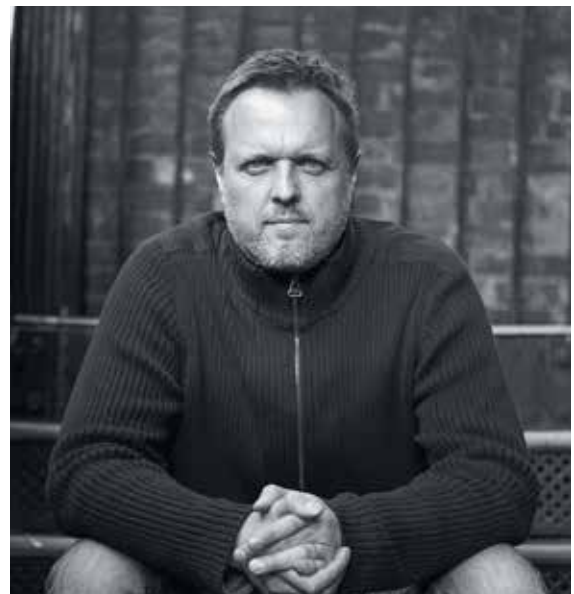
Introduction

The gap in the back support gives this chair not only its concise name, but also a distinctive look and superb comfort. A broad selection of materials means this chair can easily be adapted to various spaces.



Designer

British designer Simon Pengelly's design is characterised by a mix of minimalism, smart production-oriented thinking, timelessness and an expressiveness that ties in well with Johanson Design's Scandinavian-style furniture. His passionate desire to create production furniture with "soul" has resulted in a number of awards. Simon Pengelly was born in Henley in the UK in 1967. He went on to study at Rycotewood College and Kingston Polytechnic. Simon started Pengelly Design in 1993 and today is a product designer for some of the world's foremost furniture manufacturers.



Models



Gap 07 - 46



Gap 08 - 46



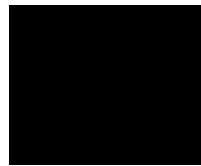
Gap 11 - 46

Material

Back - Wood



White lacquer



Black lacquer



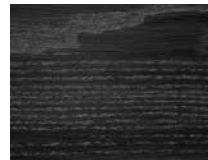
Birch veneer



Oak veneer



Walnut veneer



Black stained oak



White stained oak

Seat - Upholstery materials

Johanson offers a very generous range of fabrics, leather and artificial leather from the most reputable suppliers in the world. Should any other material be desired despite the wide selection, it is also possible to suggest other materials. Johanson does not charge start-up costs for handling non-standard materials

Multicolour - Finish RAL

Take part in Johanson's color range, 405 variants of different finishes are offered as standard on steel frames and metal details. Choose from all 195 RAL colors, alternatives are available both as solid finish (gloss 72) or Structure finish which has a matte, slightly textured elegant surface. In addition, 15 RAL colors with pearl finish and chrome are offered.

For all colours see www.johansondesign.com

195 Solid collection (gloss 72)

195 Structure collection (matte, textured surface)

15 Pearl finish collection and chrome.



Facts

Material

Fully upholstered armchair with moulded seat frame in polyether. FSC certified wood. Finished/lacquerd metal.

Fire classification

All products meet Möbelfakta's fire requirements. All polyether/foam are tested to Cal TB 117. All standard fabrics meet EN 1021:1 & 2. Other classification, for example BS 5856 (Crib 5) on request, please contact customer support.

Certificate



Recycling

All steel parts are recyclable. Before we finish the chrome/lacquer all grease/oil is removed by alkaline wash and then sent for destruction. The lacquering is produced by electrostatic epoxy powder coating that gives a minium of waste. The electrostatic chrome (chrome 3) is recyclable. The plastic parts that are used are recyclable by grinding. All upholstery and frames of synthetic material are totally without C.F.C. emissions. All glue is water based.

BIM - objects can be downloaded at

johansondesign.com



3D Max



Autocad 2D



Archicad



Autocad 3D



Revit



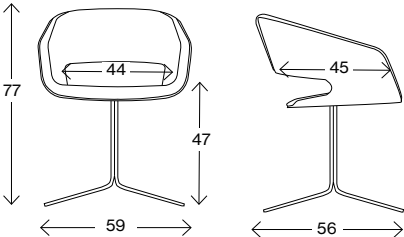
Sketchup



pCon

Facts

Measurements cm

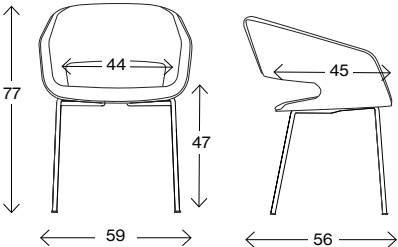


Gap 07-46

Weight (kg) 14,0
Volume (m³) 0,32

Swivel base

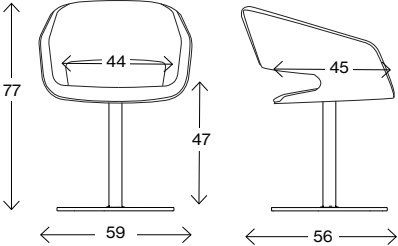
Measurements cm



Gap 08-46

Weight (kg) 12
Volume (m³) 0,32

Measurements cm



Gap 11-46

Weight (kg) 18
Volume (m³) 0,32



JOHANSON

Johanson Design AB | Anders Anderssons Väg 7 | 285 35 Markaryd | Sweden
Tel +46-433 725 00 | www.johansondesign.com