

Family

Norma

Design – Fredrik Färg & Emma Blanche



JOHANSON



Introduction

The look of each piece can vary greatly, depending on whether, for example, only one fabric is used or whether two or three different colours and textures are thrown into the mix creating contrasts or complementary shades.

To us, the Norma series has a feminine feel with a strong voice – it can be simple yet extravagant at the same time.

Norma conference chair combines an air of exclusivity with the ultimate

in seating comfort. The chair's expression differs depending on whether the customer chooses to cover Norma with one, two or three fabrics in varying materials and colours.

The opportunity to create unique, personal furnishing solutions is great. The chair's metal frame can be finished in any of the many RAL colours, according to whether the aim is to achieve a visually striking effect or to evoke a mood that is more subtle and subdued.



Designer

Stockholm based design studio Färg & Blanche is known for their experimental stance, where each expression informs the other, they effortlessly move between the exclusive hand made one off and the industrially produced, without ever losing their distinctive touch. We are proud to present a new collaboration, Norma – a series with a strong identity.



Models



Norma Chair 03-46



Norma Chair 03-46 with wheels



Norma Chair 08-46



Norma Chair 09-46



Norma 1-seater



Norma 2-seater

Material

Seat - Upholstery materials

Johanson offers a very generous range of fabrics, leather and artificial leather from the most reputable suppliers in the world. Should any other material be desired despite the wide selection, it is also possible to suggest other materials. Johanson does not charge start-up costs for handling non-standard materials.

Multicolour - Finish RAL

Take part in Johanson's color range, 405 variants of different finishes are offered as standard on steel frames and metal details. Choose from all 195 RAL colors, alternatives are available both as solid finish (gloss 72) or Structure finish which has a matte, slightly textured elegant surface. In addition, 15 RAL colors with pearl finish and chrome or polished aluminum are offered.



For all colours see www.johansondesign.com

195 Solid collection (gloss 72)

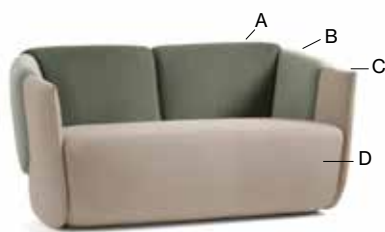
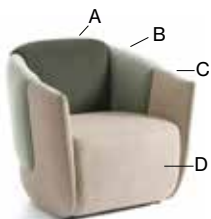
195 Structure collection (matte, textured surface)

15 Pearl finish collection

Chrome (08, 09- base)

Polished aluminum (03-base).

The look of each piece can vary greatly, depending on whether, for example, only one fabric is used or whether two or three different colours and textures are thrown into the mix creating contrasts or complementary shades. Different fabrics on quotation.



Accessories

Electric equipment - Norma 2-seater / 1-seater



Powerdot Micro

1 USB-A & 1 USB-C

(15,5W/5V/3,1A)

Black / white



Powerdot Mini USB

2 USB-C PD

(30W/20V/1,5A)

Black / white



Powerdot Mini Electric

1 power (type F, Schuko)

Black / white



Powerdot Midi

1 power (type F, Schuko) & 1 USB-C PD

(30W/20V/1,5A)

Black / white

Always placed on the right side unless otherwise specified.



Wheels

Wheels for 03-base
in black, white and
chrome.

Facts

Material

The seat is made of wood and polyether. FSC certified wood. The base is made of finished/lacquerd metal.

Fire classification

All products meet Möbelfakta's fire requirements. All polyether/foam are tested to Cal TB 117. All standard fabrics meet EN 1021:1 & 2. Other classification, for example BS 5856 (Crib 5) on request, please contact customer support.

Certificate

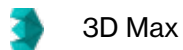


Recycling

All steel parts are recyclable. Before we finish the chrome/lacquer all grease/oil is removed by alkaline wash and then sent for destruction. The lacquering is produced by electrostatic epoxy powder coating that gives a minimum of waste. The electrostatic chrome (chrome 3) is recyclable. The plastic parts that are used are recyclable by grinding. All upholstery and frames of synthetic material are totally without C.F.C. emissions. All glue is water based.

BIM - objects can be downloaded

at johansondesign.com



3D Max



Archicad



Revit



Autocad 2D



Autocad 3D



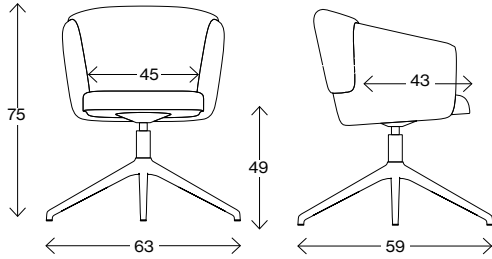
Sketchup



pCon

Facts

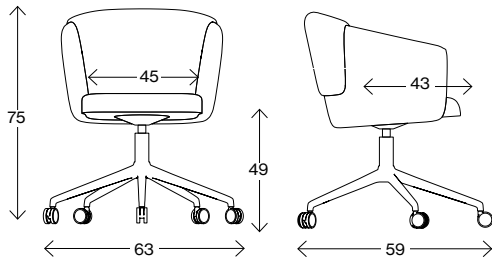
Measurements cm



Norma Chair 03-46

Weight (kg) 15,5
Volume (m³) 0,279

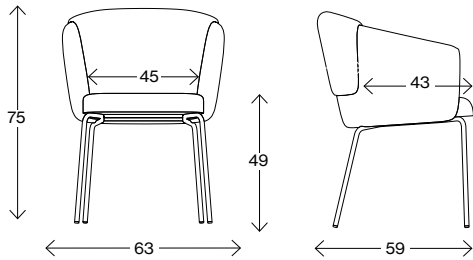
Measurements cm



Norma Chair 03-46 with wheels

Weight (kg) 15,8
Volume (m³) 0,279

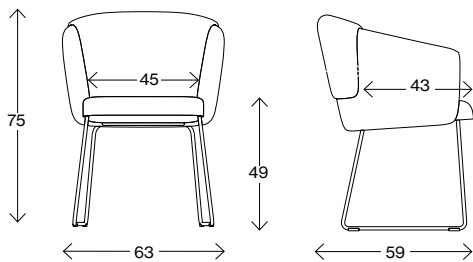
Measurements cm



Norma Chair 08-46

Weight (kg) 13,0
Volume (m³) 0,279

Measurements cm

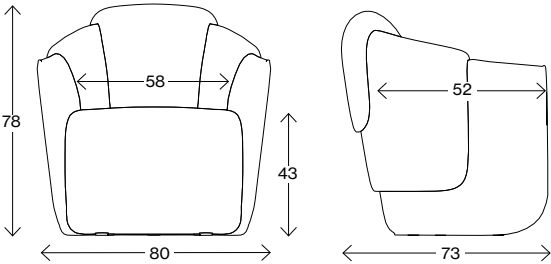


Norma Chair 09-46

Weight (kg) 13,6
Volume (m³) 0,279

Facts

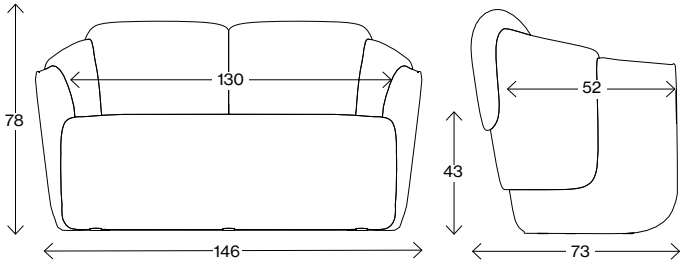
Measurements cm



Norma 1-seater

Weight (kg) 26,0
Volume (m³) 0,512

Measurements cm



Norma 2-seater

Weight (kg) 48,0
Volume (m³) 1,08







JOHANSON

Johanson Design AB | Anders Anderssons Väg 7 | 285 35 Markaryd | Sweden
Tel +46-433 725 00 | www.johansondesign.com