

# Bowl

Design – Johan Lindstén



**JOHANSON**



## Introduction

Daring to change and question the normalised with an always active design process and improvement of work have become synonymous with Johanson, where Bowl is the latest product to undergo this change. The harmonious calm radii of the armchair remain fixed, now with a more comfortable and even more ergonomic seat adapted to higher sustainability requirements and a new era!



## Designer

Johan Lindstén's products are characterised by well-thought out design and unexpected details in a creative process that optimises function. Johan wants his designs to interact with their surroundings in a way that influences the mood of the user. He draws his inspiration from the most unlikely of sources, such as the lilac bush outside his home or the Ocean of Storms on the moon.



# Model

---



**Bowl 03-46**



**Bowl 03-46 with wheels\***



**Bowl 09-46**



**Bowl 11-46**

\* Available with tilt mechanism and height adjustment

# Material

---

## Seat - Upholstery materials

Johanson offers a very generous range of fabrics, leather and artificial leather from the most reputable suppliers in the world. Should any other material be desired despite the wide selection, it is also possible to suggest other materials. Johanson does not charge start-up costs for handling non-standard materials.

## Multicolour - Finish RAL

Take part in Johanson's color range, 405 variants of different finishes are offered as standard on steel frames and metal details. Choose from all 195 RAL colors, alternatives are available both as solid finish (gloss 72) or Structure finish which has a matte, slightly textured elegant surface. In addition, 15 RAL colors with pearl finish and chrome or polished aluminum are offered.

For all colours see [www.johansondesign.com](http://www.johansondesign.com)

- 195 Solid collection (gloss 72)
- 195 Structure collection (matte, textured surface)
- 15 Pearl finish collection
- Chrome (09, 11- base)
- Polished aluminum (03-base).



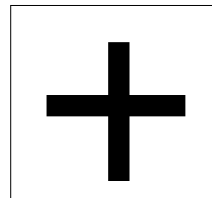
# Accessories

---



## Connector

09-stativ



## Extra

Felt gliders

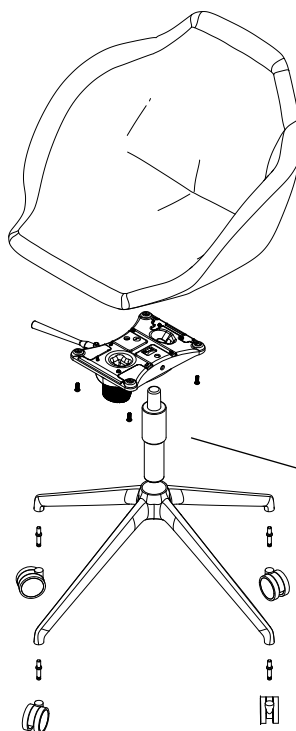


## Wheels

Wheels for 03-base in black, white and chrome.

# Facts

## Bowl in detail



Recycled Swedish steel

Separable



### Material

Fully upholstered chair with moulded seat frame in polyether. FSC certified wood. The base is made of finished/lacquered metal.

### Fire classification

All products meet Möbelfakta's fire requirements. All polyether/foam are tested to Cal TB 117. All standard fabrics meet EN 1021:1 & 2. Other classification, for example BS 5856 (Crib 5) on request, please contact customer support.

### Certificate



### BIM - objects can be downloaded

at [johansondesign.com](http://johansondesign.com)



3D Max



Autocad 3D



Archicad



Sketchup



Revit



pCon



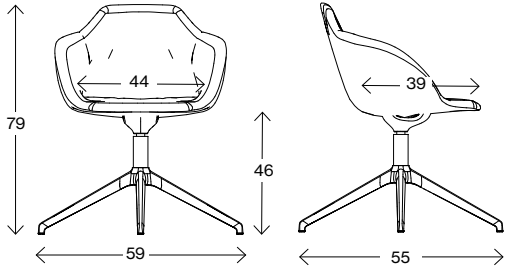
Autocad 2D

### Recycling

All steel parts are recyclable. Before we finish the chrome/lacquer all grease/oil is removed by alkaline wash and then sent for destruction. The lacquering is produced by electrostatic epoxy powder coating that gives a minimum of waste. The electrostatic chrome (chrome 3) is recyclable. The plastic parts that are used are recyclable by grinding. All upholstery and frames of synthetic material are totally without C.F.C. emissions. All glue is water based.

# Facts

Measurements cm

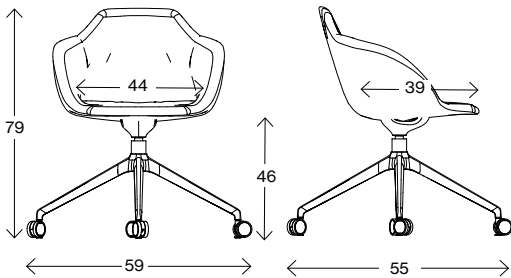


**03-46**

Weight (kg) 13  
Volume (m<sup>3</sup>) 0,33

Swivel base

Measurements cm

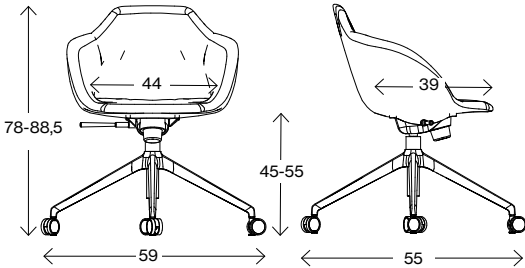


**03-46 with wheels**

Weight (kg) 14  
Volume (m<sup>3</sup>) 0,33

Swivel base

Measurements cm

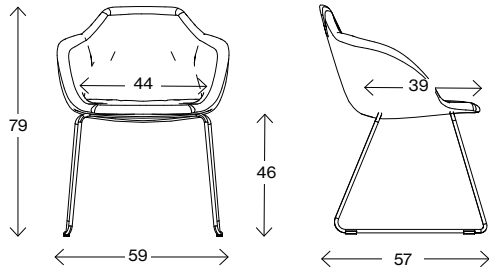


**03-46 with wheels and height adjustment**

Weight (kg) 14  
Volume (m<sup>3</sup>) 0,33

Swivel base

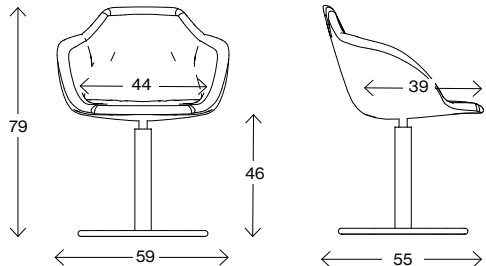
Measurements cm



**09-46**

Weight (kg) 13  
Volume (m<sup>3</sup>) 0,33

Measurements cm



**11-46**

Weight (kg) 19  
Volume (m<sup>3</sup>) 0,33



# JOHANSON

---

Johanson Design AB | Anders Anderssons Väg 7 | 285 35 Markaryd | Sweden  
Tel +46-433 725 00 | [www.johansondesign.com](http://www.johansondesign.com)