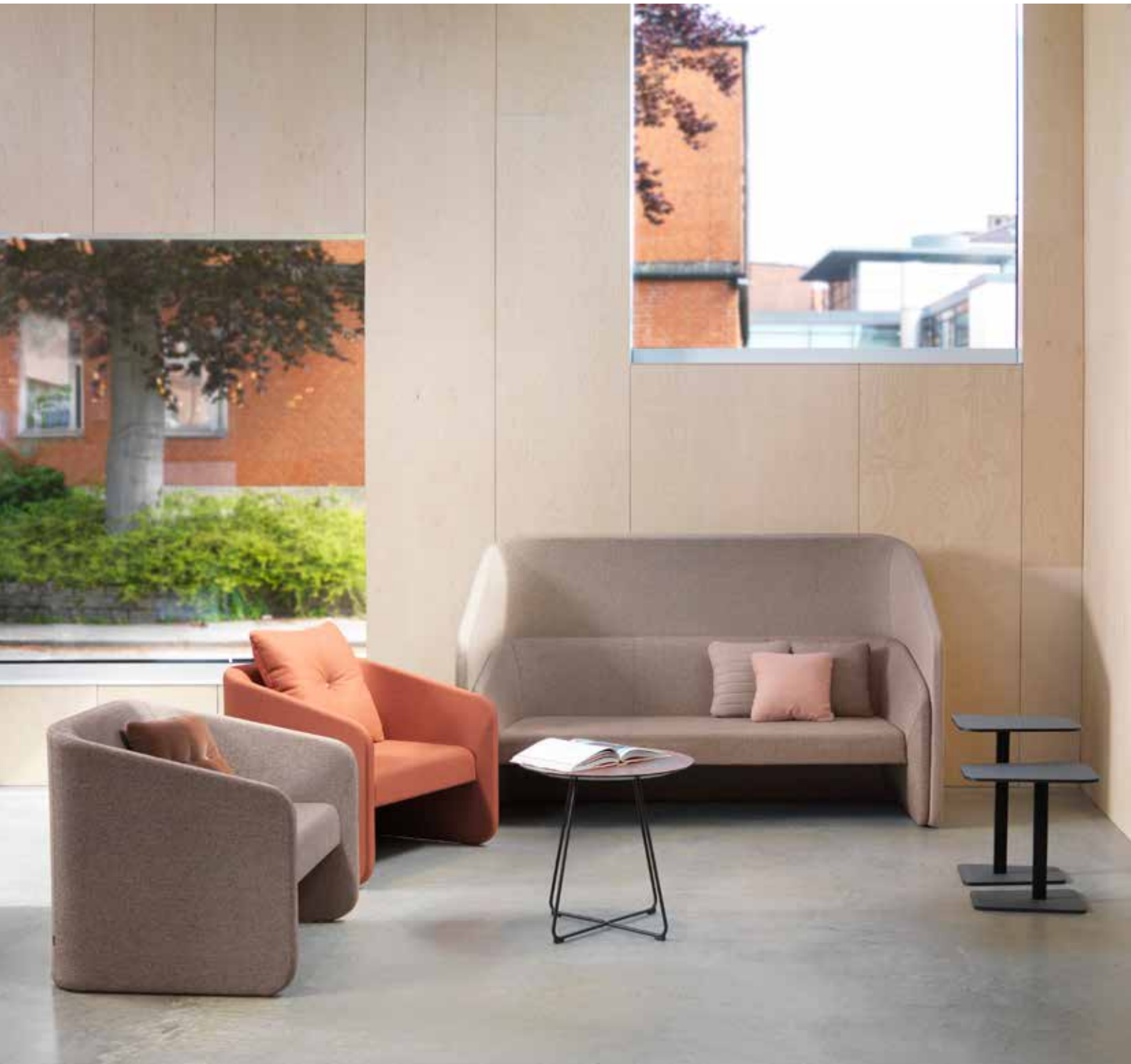


# Race

Design – Cory Grosser



**JOHANSON**



## Introduction

Race is a modern seating series that comprises an armchair and 2-seat and 3-seat sofas. The underlying thought is that the generous proportions will be an invitation to truly relax for a while. The intention is for Race to stand out as the obvious choice in lounges and hotel lobbies, while also finding a natural place in contemporary private homes.



## Designer

Cory Grosser is an American industrial designer who has been running his own design studio in Los Angeles since 2002. Today Cory is acknowledged as one of the USA's leading names in product design and has received numerous awards for his work. During autumn 2016 Johanson introduced the first collaboration with Cory Grosser: the series Race.



# Models

---



1-seater



1-seater with screen



2-seater



2-seater with screen



3-seater



3-seater with screen

# Material

---

## Seat - Upholstery materials

Johanson offers a very generous range of fabrics, leather and artificial leather from the most reputable suppliers in the world. Should any other material be desired despite the wide selection, it is also possible to suggest other materials. Johanson does not charge start-up costs for handling non-standard materials.

# Accessories

---

## Electrical equipment

Thanks to the bracket, you can mount a Powerdot Mini with power socket or smart charging with 2 USB-C sockets in the desired location using the included screws.

Connect multiple Powerdots in series using a single connection cable. Series-connected Powerdots are available on request.



## Bracket



**Powerdot bracket mini, single**  
Black / white



**Powerdot bracket mini, double**  
Black / white

## Powerdot



**Powerdot Mini Electric**  
**1 power** (type F, Schuko)  
Black / white



**Powerdot Mini USB**  
**2 USB-C PD**  
(30W/20V/1,5A)  
Black / white



**Buttons**  
Ø18mm, Ø30mm,  
Ø50mm

# Facts

---

## Material

The seat is made of FSC certified wood and padding is made of polyether/foam.

## Fire classification

All products meet Möbelfakta's fire requirements. All polyether/foam are tested to Cal TB 117. All standard fabrics meet EN 1021:1 & 2. Other classification, for example BS 5856 (Crib 5) on request, please contact customer support.

## Recycling

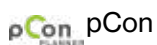
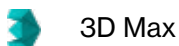
All steel parts are recyclable. Before we finish the chrome/lacquer all grease/oil is removed by alkaline wash and then sent for destruction. The lacquering is produced by electrostatic epoxy powder coating that gives a minimum of waste. The electrostatic chrome (chrome 3) is recyclable. The plastic parts that are used are recyclable by grinding. All upholstery and frames of synthetic material are totally without C.F.C. emissions. All glue is water based.

## Certificate



## BIM - objects can be downloaded

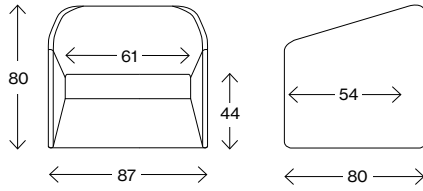
at [johansondesign.com](http://johansondesign.com)



# Facts

## Race

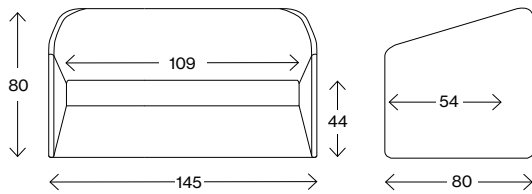
Measurements cm



### 1-seater

Weight (kg) 32,1  
Volume (m<sup>3</sup>) 0,557

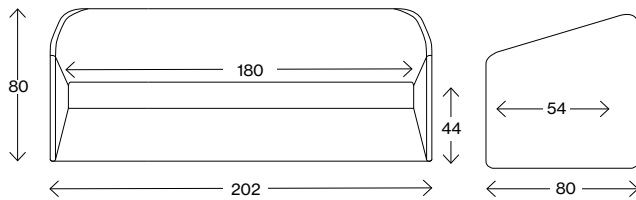
Measurements cm



### 2-seater

Weight (kg) 62,7  
Volume (m<sup>3</sup>) 0,928

Measurements cm



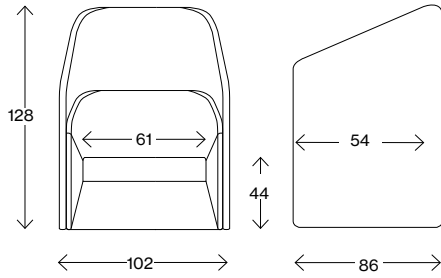
### 3-seater

Weight (kg) 93,6  
Volume (m<sup>3</sup>) 1,293

# Facts

## Race

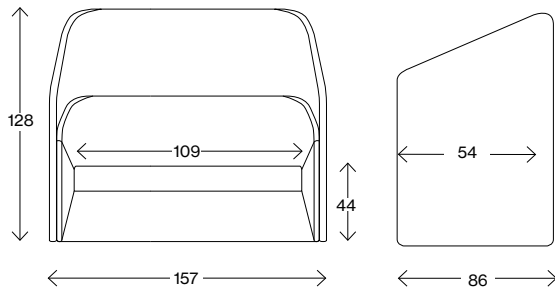
Measurements cm



### 1-seater with screen

Weight (kg) 63,0  
Volume (m<sup>3</sup>) 1,123

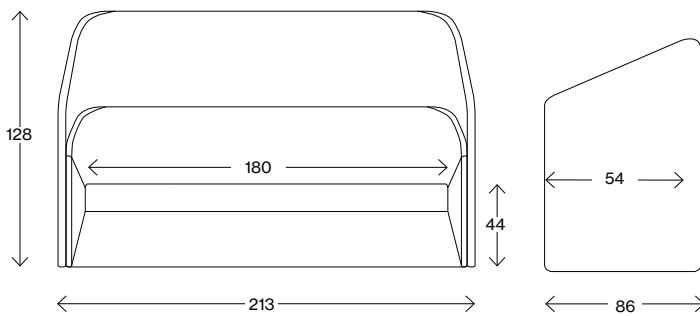
Measurements cm



### 2-seater with screen

Weight (kg) 122,0  
Volume (m<sup>3</sup>) 1,728

Measurements cm



### 3-seater with screen

Weight (kg) 182,1  
Volume (m<sup>3</sup>) 2,345



# JOHANSON

---

Johanson Design AB | Anders Anderssons Väg 7 | 285 35 Markaryd | Sweden  
Tel +46-433 725 00 | [www.johansondesign.com](http://www.johansondesign.com)