

Bowl

Design – Johan Lindstén



JOHANSON



Introduction

Daring to change and question the normalised with an always active design process and improvement of work have become synonymous with Johanson, where Bowl is the latest product to undergo this change. The harmonious calm radii of the armchair remain fixed, now with a more comfortable and even more ergonomic seat adapted to higher sustainability requirements and a new era!



Designer

Johan Lindstén's products are characterised by well-thought out design and unexpected details in a creative process that optimises function. Johan wants his designs to interact with their surroundings in a way that influences the mood of the user. He draws his inspiration from the most unlikely of sources, such as the lilac bush outside his home or the Ocean of Storms on the moon.



Model



Bowl 03-46



Bowl 03-46 with wheels*



Bowl 09-46



Bowl 11-46

* Available with tilt mechanism and height adjustment

Material

Seat - Upholstery materials

Johanson offers a very generous range of fabrics, leather and artificial leather from the most reputable suppliers in the world. Should any other material be desired despite the wide selection, it is also possible to suggest other materials. Johanson does not charge start-up costs for handling non-standard materials.

Multicolour - Finish RAL

Take part in Johanson's color range, 400 variants of different finishes are offered as standard on steel frames and metal details. Choose from all 192 RAL colors, alternatives are available both as solid finish (gloss 72) or Structure finish which has a matte, slightly textured elegant surface. In addition, 15 RAL colors with pearl finish and chrome or polished aluminum are offered.

For all colours see www.johansondesign.com

- 192 Solid collection (gloss 72)
- 192 Structure collection (matte, textured surface)
- 15 Pearl finish collection
- Chrome (09, 11- base)
- Polished aluminum (03-base).

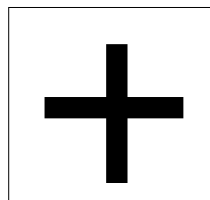


Accessories



Connector

09-stativ



Extra

Felt gliders

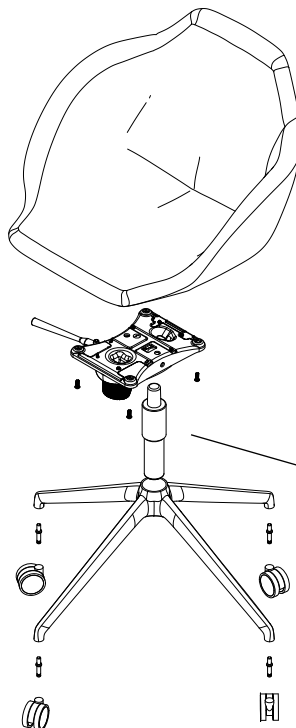


Wheels

Wheels for 03-base in black, white and chrome.

Facts

Bowl in detail



Recycled Swedish steel

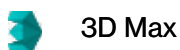
Separable



Material

The seat is made in moulded CMHR foam (density 65kg) that meets the highest requirements for flammability (CMHR quality). The base is made of finished/lacquered metal.

BIM - objects can be downloaded
at johansondesign.com



3D Max



Archicad



Revit



Autocad 2D



Autocad 3D



Sketchup



pCon

Recycling

All steel parts are recyclable.

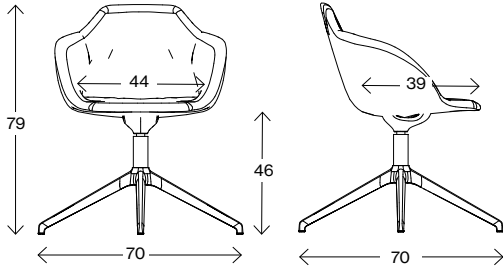
Before we finish the chrome/lacquer all grease/oil is removed by alkaline wash and then sent for destruction. The lacquering is produced by electrostatic epoxy powder coating that gives a minimum of waste. The electrostatic chrome (chrome 3) is recyclable. The plastic parts that are used are recyclable by grinding. All upholstery and frames of synthetic material are totally without C.F.C. emissions. All glue is water based.

Material declaration

For more information about the product please download material declaration on our website, under Downloads à Product Information at www.johansondesign.com

Facts

Measurements cm

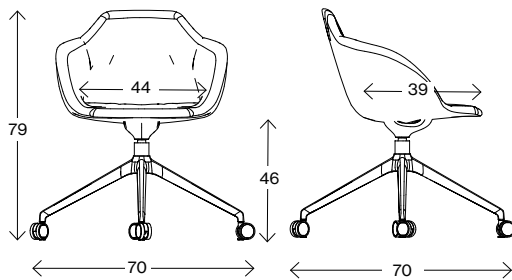


03-46

Fabric requirement (r.m) 1,2
 Leather requirement (m²) 2,5
 Weight (kg) 13
 Volume (m³) 0,33

Swivel base

Measurements cm

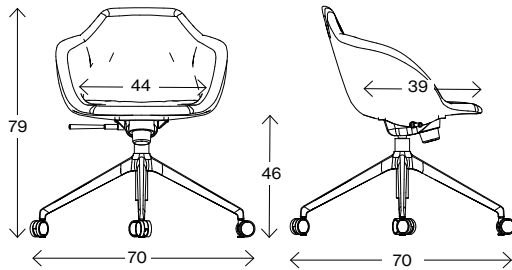


03-46 with wheels

Fabric requirement (r.m) 1,2
 Leather requirement (m²) 2,5
 Weight (kg) 14
 Volume (m³) 0,33

Swivel base

Measurements cm

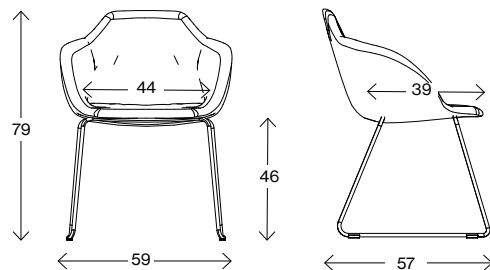


03-46 with wheels and height adjustment

Fabric requirement (r.m) 1,2
 Leather requirement (m²) 2,5
 Weight (kg) 14
 Volume (m³) 0,33

Swivel base

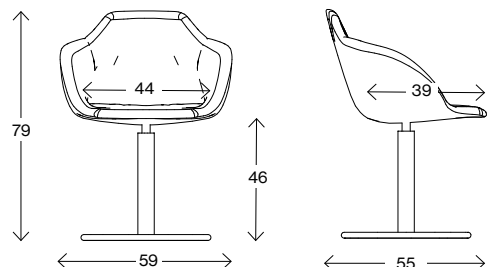
Measurements cm



09-46

Fabric requirement (r.m) 1,2
 Leather requirement (m²) 2,5
 Weight (kg) 13
 Volume (m³) 0,33

Measurements cm



11-46

Fabric requirement (r.m) 1,2
 Leather requirement (m²) 2,5
 Weight (kg) 19
 Volume (m³) 0,33



JOHANSON

Johanson Design AB | Anders Anderssons Väg 7 | 285 35 Markaryd | Sweden
Tel +46-433 725 00 | www.johansondesign.com